

→ www.cwre.ca → www.cpwe.ca

CANADIAN WASTE & RECYCLING EXPO



ATTENDEE INFORMATION



TORONTO 2006

Register to Attend at www.CWRE.ca or www.CPWE.ca

Sponsored by:



November 29 – 30, 2006

International Centre

Toronto, Ontario, Canada



BETTER YOUR BUSINESS

Learn better business practices.

Invest in better business products.

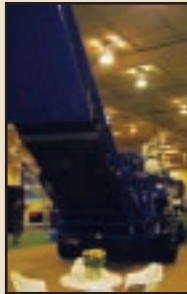
Make better business connections.

Come and discover new and advanced products that offer untapped potential in opportunities at the 2006 Canadian Waste and Recycling Expo, held in conjunction with Canadian Public Works Expo. With an estimated 200 exhibitors and 3500 attendees, this show offers practical solutions for the industry.

Unite with industry professionals as they present answers to the most common challenges faced in the waste & recycling industry and the public works industry.

C A N A D I A N
WASTE & RECYCLING
E X P O

 CANADIAN
PUBLIC WORKS EXPO



**Your peers come
here for the latest
industry innovation,
shouldn't you?**

INDUSTRY PARTNERS

The success of the Canadian Waste & Recycling Expo / Canadian Public Works Expo is enriched by the support of these key industry leaders:



SPECIAL EVENTS

Wednesday, November 29

12:00 p.m. to 1:30 p.m.

SWANA - AGM & Luncheon

SWANA - Ontario

Guest Speaker: Guy Crittenden - Editor-in-Chief, Solid Waste & Recycling. Discusses Industry Trends in Canada

Tickets: \$59

5:00 p.m. to 6:30 p.m.

Evening Reception

Hosted by: OWMA / Consulate-General of the Kingdom of the Netherlands

For more information:

OWMA - Call 905-791-9500, Email: mgoulding@owma.org

Thursday, November 30

12:00 p.m. to 1:30 p.m.

mwin Annual Canadian Waste & Recycling Luncheon

Hosted by: mwin - Municipal Waste Integration Network

Guest Speaker: John Wright, Sr. Vice President, Opinion & Social Research / Public Affairs, Ipsos Reid, Toronto

Tickets: \$50 each or \$450 for a table of 10

SEMINAR PROGRAM

Educational. Informative. Industry Solutions.

Information is the key. Participate in the comprehensive seminar program that will educate you on the current trends effecting the industry. Participate in thorough discussions on issues that are present in today's marketplace.

Register online now to attend these exciting and knowledge packed sessions. Each conference session is \$49.00 CDN (includes GST). All seminar registrants receive free admission to the tradeshow.



For complete session details, please visit us online. Each conference session is \$49.00 CDN (includes GST). All registrants for conference sessions receive free admission to both The Canadian Public Works Expo and The Canadian Waste & Recycling Expo.

Wednesday, November 29

10:30 a.m. to 11:15 a.m.

PLENARY SESSION: NO CHARGE



Ton B. Holtkamp

Sponsored by: Consulate-General of the Kingdom of the Netherlands

Topic: Waste Management in the Netherlands and the European Union

Presented by: Ton B. Holtkamp – Director Chemicals, Waste, Radiation Protection Directorate, The Netherlands Ministry for Housing, Spatial Planning and the Environment

10:00 a.m. to 4:00 p.m.

TRADE SHOW FLOOR OPEN

9:00 a.m. to 10:15 a.m.

MORNING SESSIONS

Seminar #1 (\$49)

Sponsored by: Ontario Waste Management Association

Topic: Hazardous Waste – From Generation to Treatment to Disposal



Andj Dominski

Part 1: Ontario's 'New' Land Disposal Restriction (LDR) Regulation

Presented by: Andj Dominski – Assistant Director, Waste Management Policy Branch, Ministry of the Environment, Toronto, Ontario

Andj is currently the Acting Director of the Ministry of the Environment's Waste Management Policy Branch. He has recently been involved in developing Ontario's new hazardous waste land disposal restriction regulation, developing waste management tools for municipalities and private sector dealing with both disposal and diversion and nutrient management. He has over 25 years of experience with the Ministry. He has managed the province's environmental assessment program and the waste approvals program. He is a professional engineer with a Masters degree in environmental engineering from the University of Toronto.

Learn about the new Ontario LDR regulations that require hazardous wastes to be 'pre-treated' prior to land disposal and the timelines for compliance for waste generators, haulers, recyclers and disposal facilities. Hear about the new guidance documents' developed by the Ministry of the Environment to assist with hazardous waste management under the new requirements.



Chris Small

Part 2: The Federal Framework for Hazardous Waste Management & Import / Export Regulations

Presented by: Chris Small – Environmental Manager, Clean Harbors Canada Inc., Corruna, Ontario

Chris Small is Regional Manager of Environmental Affairs for the Clean Harbors Canada, Inc. Chris serves as the primary liaison for Clean Harbors in regulatory issues pertaining to Environment Canada and various Provincial Governments. His regional responsibilities include environmental compliance for facilities located in Ontario, Manitoba and British Columbia.

Chris has worked in the hazardous waste industry for 14 years and during that time has gained exposure to numerous environmental and regulatory issues. He is conversant in the Export & Import of Hazardous Waste and Hazardous Recyclable Material Regulations; the General – Waste Management Regulation of Ontario; and, the Transportation of Dangerous Goods Regulations.

As a member of the Ontario Waste Management Association's environmental affairs committee and involvement with the Sarnia-Lambton Environmental Association, Chris has fostered relationships with many senior industrial leaders from the petroleum refining and chemical sectors of industry as well as building a strong network with officials within all levels of government.

Recent changes to the Import/Export regulations under the Canadian Environmental protection Act (CEPA) affect all managers of hazardous waste. Hear about the changes to manifests and the impact on generators and haulers. Learn about the impacts of 'waste reduction plans' relative to exports and the long term implications to waste management in Ontario.

Seminar #2 (\$49)

Sponsored by: mwini - Municipal Waste Integration Network

Presented by: Lyle Parsons – VP Environment, R.J. Burnside & Associates; Jamie Hollingsworth – Manager, Solid Waste Services, R.J. Burnside & Associates; Jim Walls – Geoscientist, R.J. Burnside & Associates

Topic: Best Management Practices for Small Landfills - Learn about best management practices that should be considered in your landfill management and operations such as: innovative design; operational controls for entry of waste; operator training; tracking your C. of A. requirements and many others. Key basics will be covered that you need to know about landfill ground and surface water management and monitoring. Cost

controls, value engineering and management programs including the value of strategic planning will be discussed. This will be a great primer session for decision makers and public works managers of small landfills.

Seminar #3 (\$49)

Sponsored by: mwini - Municipal Waste Integration Network

Presented by: Michael Cant – Senior Solid Waste Planner, Ontario Region - Waste Sector Leader, Golder Associates

Topic: What is the "Right" residuals processing technology for your municipality? Lessons learned from large to small municipalities

Learn from industry experts on "How To" select an appropriate residuals processing technology. The speakers will present a series of lessons learned that will point to the key factors to be considered in selecting the "right" technology for your unique circumstances, big or small. Considerations such as waste types and throughput, flexibility, business arrangement, reliability amongst others, will be discussed. You will retain key considerations and their relative importance for implementation in your municipality.

Seminar #4 (\$49)



Graham Zeisner

Sponsored by: Association of Ontario Road Supervisors

Presented by: Graham Zeisner – CRS-S - Association of Ontario Road Supervisors

Topic: Legal Issues Associated with Municipal Winter Maintenance Operations - In today's world, maintenance operations face numerous challenges and these are growing at an increasing rate. Municipalities need to proactively protect themselves against an emerging litigation trend in society. This seminar will discuss some of the positive steps that are necessary to deal with the statutory requirements for winter operations.

Graham worked for the Region of Ottawa-Carleton/City of Ottawa for 30 years including 23 years as Construction Superintendent responsible for road construction, rehabilitation and maintenance. Since 2002 he has successfully operated his own company RoadLogic Inc. (www.roadlogic.ca) – specializing in Public Works related services. He is currently under contract with the Association of Ontario Road Supervisors (AORS) as their Training Coordinator. Graham is a Certified Road Supervisor – Senior (CRS-S) and a Certified Municipal Manager (CMM 111).

Seminar Program (continued)

Seminar #5 (\$49)

Sponsored by: SWANA - Ontario Chapter

Topic: Collection Safety - Emerging Issues

Moderator: Al Dickens – Technical Analyst, Region of Peel

With more and more specialized collection vehicles on our roads, new safety issues confront us. This session reviews several new safety requirements and procedures for collection operations.

Part 1: Fall Arrest – Recycling Trucks

Presented by: Mark Collins – Landfill Supervisor, County of Wellington

Part 2: Fall Protection – Rolloff Bin Tarping and Securement

Presented by: Rob Cook – President, Ontario Waste Management Association

12:00 p.m. to 1:30 p.m.

LUNCH

SWANA – AGM & Luncheon (\$59)

Sponsored by: SWANA - Ontario

Guest Speaker: Guy Crittenden – Editor-in-Chief, Solid Waste & Recycling Magazine - Industry Trends in Canada.

3:30 p.m. to 4:45 p.m.

AFTERNOON SESSIONS

Seminar #6 (\$49)



Gerry Martell

Sponsored by: Ontario Waste Management Association

Presented by: Col Sel Transit, Montreal, QC – Speaker TBD; Gerry Martell – Manager, Operational Support, Solid Waste Management Services, North and East Districts - City of Toronto

Topic: Overcoming the fears and phobias associated with automated collection

Ensuring collection services to 230 000 Single Family Homes, 212 000 Multi-residential Units and 576 Schools is the challenge that Mr Martell and his team face everyday, of every week. This involves managing a fleet of 186 trucks, half of which are co-collection vehicles. Gerry oversees the procurement of all new and replacement collection vehicles, is involved in the writing of collection truck specifications, and prepares the annual

operating budget (close to \$29.5 Million in 2006). Gerry Martell successfully introduced the Green Bin collection program in the North and East Districts, and the mandatory recycling program to multi-residential buildings. Gerry is also in charge of controlling and managing all waste diversion initiatives in the North and East Districts.

Gerry started with Scarborough back in 1977 where he was responsible for the City's three recycling depots which were first introduced in 1968. He also participated in the introduction of the recycling program to residential properties in Scarborough back in 1988. Gerry Martell has a degree in Human Resource Management from Centennial College.

Automating collection operations is a very serious process. First and foremost, it demands an in-depth look at existing operations and how they are conducted. Then, selling the concept internally and re-engineering the processes demand time, energy and resources which are not always granted. This partly explains why many automation projects get postponed or abandoned.

So, identifying the fears, needs and concerns of all stakeholders is the first step. Choosing the right equipment, developing targeted outreach materials that address the needs, and delivering the promised service reliability and on-going customer service and support, are keys to a successful automated program.

Seminar #7 (\$49)

Sponsored by: mwin - Municipal Waste Integration Network

Topic: How to "Shorten" the quest for Provisional Certificate of Approval (Waste) and (Air/Noise) under the EPA

Presented by: Frederick (Rick) Mosher – Shareholder, Conestoga-Rovers & Associates Ltd.; Anne Hiscock – Manager, Environmental Affairs, Green Lane Landfill and Green Lane Environmental Group Limited Partnership; Doug Robertson, Sr. – Environmental Planner, Conestoga-Rovers & Associates Ltd.; Paul Smolkin, P.Eng. – Principal, Golder Associates Inc.; and Gordon Reusing – Shareholder, Conestoga-Rovers & Associates Ltd.

This session moderated by Mr. Frederick (Rick) Mosher, Shareholder, Conestoga-Rovers & Associates will offer practical tools related to shortening of the quest for Provincial Certificates of Approval for Waste, Air and Noise under the Environmental Protection Act. The session will discuss EPA approvals from the viewpoint of a private waste management company seeking approvals; tools related to shortening the Environmental Assessment process; approvals related

Seminar Program (continued)

to organic waste management facilities; and suggest practical tools for submission of air approvals to ensure a quick turnaround time.

Seminar #8 (\$49)

Sponsored by: SWANA - Ontario Chapter

Topic: Transfer Station Operations

Moderator: Beth Goodger – Director, Solid Waste, City of Hamilton

With the increasing dependence on transferring waste, the operation and facilities of Transfer Stations continues to be improved. This session will look at several issues at transfer facilities.

Part 1: Design for Information Systems
Mark Wills – President, Geoware Inc

Part 2: Changing Transfer Station Design
Stefan Bukojemsky – Director, Solid Waste Facilities, URS Corporation

Part 3: Small Rural Transfer Stations
Sherry Arcaro – Manager of Environmental Services, County of Peterborough

Seminar #9 (\$49)



Jan Roermann

Sponsored by: Consulate-General of the Kingdom of the Netherlands

Presented by: Jan Roermann, Christiaens Group

Topic: Dutch Technology - In Vessel Composting

Jan Roermann has over 25 years of experience in the development of new composting systems and for optimising process technology. He has been instrumental in the development and marketing of the Christiaens tunnel composting system worldwide. Jan and his team develop complete process designs that achieve the stringent environmental guidelines imposed by most European countries.

Municipal Solid Waste – Biosolids – Green Waste – Animal By-products – Animal Manures: All these organic waste products are easily degraded by a diverse range of micro-organisms. However, when this process takes place inside a “closed box”, it is possible to control all parameters involved in this process.

Seminar #10 (\$49)



Mike Birett

Sponsored by: AMRC - Association of Municipal Recycling Coordinators

Presented by: Mike Birett – Manager, Program Development and Planning, Solid Waste Management Branch, York Region

Topic: Paying to Blue Box Best Practices: Are You Ready for 2008?

Mike Birett is currently the Manager of Program Development and Planning for York Region's Waste Management Branch. Mike has worked in the field of municipal waste management for over fifteen years with responsibilities spanning environmental enforcement, composting operations and program development. Prior to joining Regional government, Mike worked for several private sector companies in both the pulp and paper and waste management industries. At present he is Chair of the Association of Municipal Recycling Coordinators.

In 2008, payment to municipalities under the Blue Box Program Plan will be based on “best practices”. Contractors and municipalities alike will be impacted. For municipalities it may mean rethinking the way they operate their programs. For contractors it will mean an increasingly competitive environment and pressure to release more performance related data. This session will highlight key elements of the impending changes and their impact on the industry.

Evening Activities: OWMA / Consulate-General of the Kingdom of the Netherlands Reception - 5:00 p.m. to 6:30 p.m. For more information contact: OWMA - Call 905-791-9500, Email: mgoulding@owma.org

Thursday November 30

10:00 a.m. to 4:00 p.m.

TRADE SHOW FLOOR OPEN

9:00 a.m. to 10:15 a.m.

MORNING SESSIONS:

Seminar #11 (\$49)



David Merriman

Sponsored by: Ontario Waste Management Association

Presented by: David Merriman – MacViro Consultants

Seminar Program (continued)

Topic: Waste Diversion in the Residential and IC&I Sectors - Infrastructure Challenges

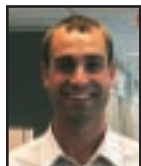
David Merriman holds an engineering degree from Queens, a MBA from Western and has more that 25 years diverse consulting experience. He has played a key role in the development of:

- New recycling facilities in Toronto and Peel
- The Algonquin Power Energy from Waste Facility in Brampton
- The City of Toronto's Dufferin Anaerobic Digestion Facility

He is currently assisting the Regions of Niagara, Durham, York, and Peel as well as The Cities of Toronto and Hamilton in developing waste disposal solutions.

Learn about the technical, government policy and environmental approval-related challenges facing waste diversion in Ontario and the current infrastructure needs to support increased diversion rates. Hear about the business opportunities associated with increased waste diversion and understand the direction of Ontario municipalities relative to waste diversion programs and infrastructure.

Seminar #12 (\$49)



Jake DeBruyn

Sponsored by: Composting Council of Canada

Presented by: Jake DeBruyn
– Ontario Ministry of Agriculture, Food and Rural Affairs.

Topic: Advantages of Anaerobic Digestion for Organics Management

Jake DeBruyn P.Eng is the Engineer for New Technology Integration at the Ontario Ministry of Agriculture, Food and Rural Affairs. Jake has been with the Ministry for five years and has focused on a variety of areas, including Nutrient Management, rural odour control, agricultural washwaters, manure technologies, and most recently on farm and rural energy opportunities. Jake is based in the Guelph OMAFRA office, and covers the region of Halton, Peel and Simcoe for rural environmental issues.

Trevor Barton – Region of Peel – Launch of Peel's Region-Wide Organics Diversion Program

Seminar #13 (\$49)

Sponsored by: SWANA - Ontario Chapter

Moderator: Steen Klint – Energy Manager, St. Lawrence Cement

Topic: Selecting a Collection Option

The evolution of waste diversion is resulting in major changes to how garbage, recyclables and organic materials are handled. This session looks at the study and rational that determined the new collection systems and equipment utilized by 3 prominent Canadian Municipalities.

Part 1: Whitby's Experience

Murray Gale – Supervisor, Solid Waste, Town of Whitby

Part 2: Winnipeg's Experience

Dan McInnis – Manager of Solid Waste, City of Winnipeg

Part 3: Hamilton's Experience

Colin Vidler – Supervisor of Waste Collections, City of Hamilton

Seminar #14: \$49

Sponsored by: Consulate-General of the Kingdom of the Netherlands

Presented by: Dr. Eveline Jonkhoff – Alval Energie Bedrijf

Topic: Dutch Technology - Energy from Waste

Drs. Eveline Jonkhoff has studied Biology at the University of Amsterdam. Specialisations: Environment & Society, toxicology and environmental legislation. Since her study she has been working for the City of Amsterdam on Waste-to-Energy. She fulfilled several jobs within the City of Amsterdam and has build up an experience on this subject of about 17 years now. For example, during the construction and exploitation of the present Waste-to-Energy Plant in Amsterdam she was involved in building up long term relationships with stakeholders. Since mid 2003 Drs. Eveline Jonkhoff has been working as Marketing manager of the Alval Energie Bedrijf – Waste and Energy Company, City of Amsterdam.

Waste is Innovation: Introduction of Amsterdam's waste fired power plant in the international market for sustainable energy.

Learn from the Dutch long term experience on integrated waste management. Ban on landfill in combination with a high level of recycling and high standard of clean Waste to Energy technology. The City of Amsterdam has 85 years of experience in transforming municipal solid waste into sustainable energy and high quality building materials. The Waste and Energy Company, City of Amsterdam, has developed world's first high efficiency W-t-E plant: Waste Fired Power Plant (WFPP®).

Seminar Program (continued)

12:00 p.m. to 1:30 p.m.

LUNCH

mwin Annual Canadian Waste & Recycling Luncheon

\$50 each or \$450 for a table of 10

Sponsored by: mwin - Municipal Waste Integration Network

Guest Speaker: John Wright, Sr. Vice President, Opinion & Social Research / Public Affairs, Ipsos Reid, Toronto

3:30 p.m. to 4:45 p.m.

AFTERNOON SESSIONS

Seminar #15 (\$49)

Sponsored by: Composting Council of Canada

Topic: Composting Markets

Presented by: Ron Bisaillon - Filtrexx Canada
Soil Erosion Control as a Market for Compost

TBD - Landscape Ontario
Compost Use in the Landscaping Industry

Seminar #16: (\$49)

Sponsored by: SWANA - Ontario Chapter

Moderator: Linda Churchill – Senior Environmental Engineer, Region of Waterloo

Topic: Emerging Disposal Options

Access to landfill disposal continues to be under siege, whether it is a border closing or whether it is permitting issues here at home. This session will review several emerging disposal options in lieu of Landfill disposal.

Part 1: Opportunities within the Cement Industry
Steen Klint – Energy Manager, St. Lawrence Cement

Part 2: Toronto's Search for Alternatives
Geoff Rathbone – Manager, Policy and Planning, City of Toronto

Part 3: TBD

Seminar #17 (\$49)

Sponsored by: Consulate-General of the Kingdom of the Netherlands

Topic: Dutch Technology - Separation Systems and the Handling of MSW

Presented by: Robert A. Slikker – International Bulk Handling Technology BV

Robert A. Slikker is president of International Bulk Handling Technology BV. (IBT) He has been active in the field of complex bulk handling systems since 1991. From 1995 until 1998 he was employed by Beltwall in St. Louis, USA, the world's largest manufacturer of cross rigid corrugated sidewall belts. During these years he has been living in the USA. Major expertise are systems for refuse incineration plants and the handling of fly ash and slag.

Application of special systems for separation and handling of MSW at transfer stations and refuse incineration plants.

Seminar #18 (\$49)



Kim Kidd Kitagawa

Sponsored by: AMRC - Association of Municipal Recycling Coordinators

Presented by: Kim Kidd Kitagawa
– Waste Management Coordinator,
Waste Management Division,
Waterloo Region

Topic: Multi-residential Recycling: The Untamed Frontier!

Kim is currently a Waste Management Coordinator at the Region of Waterloo. She has been in municipal waste management for over 15 years and her responsibilities have included:

- Coordinating the Environmental Management System/ISO 14001 registration at Region's Waste Management Centre; and
- Implementing and managing various curbside recycling, garbage and organic programs.

She has participated in a number of internal and external committees and is presently the on the Board of Directors for the Association of Municipal Recycling Coordinators, Chair of its Policy and Programs Committee.

Kim received her Bachelor of Environmental Studies from the University of Waterloo – majoring in Environment and Resource Studies.

Multi-residential recycling programs have always been challenging – dealing with site-specific needs, contamination rates, transient populations, data management and effective communication. With the multi-residential sector being touted as the next least cost tonne, it is important that municipalities and contractors work together to maximize diversion rates. Find out the latest initiatives in dealing with the challenges of multi-residential recycling.

TRAVEL INFORMATION

Canadian Waste & Recycling / Canadian Public Works Expo.

The International Centre.

The Canadian Waste & Recycling Expo will take place November 29-30, 2006, at the International Centre in Mississauga (Toronto), Ontario, Canada. The ideal venue, the International Centre provides free on-site parking and is conveniently located near a wide array of dining establishments and over 10,000 hotel guest rooms.

Toronto Pearson International Airport is a mere three minutes from the International Centre. One of the largest airports in North America, it is the gateway to great sports venues, the CN Tower, endless shopping, top theatre and a scenic waterfront.

For more information on Mississauga or the greater Toronto area, visit

www.mississauga.ca/portal/discover
www.torontotourism.com



The International Centre - Mississauga (Toronto), Ontario, Canada

The Canadian Waste & Recycling Expo offers travel, transportation and hotel options to provide a virtually seamless travel experience. Contact the following companies below to receive special promotional or discounted rates.

Car Rentals - AVIS:

Receive special automobile rental rates with Avis Rentals using AWD# B712899 for the upcoming Canadian Waste & Recycling Expo. Go to www.cwre.ca for more information or contact Avis Rentals directly at 800.331.1600 or www.avis.com

Hotel:

All host hotels will have complimentary shuttle service to the show during show hours.

WYNDHAM BRISTOL PLACE • 416.675.9444

www.wyndham.com/groupevents/152CWRE/main.wnt

A Four Diamond hotel, the Wyndham Bristol Place Toronto Airport is a mere five minutes from Pearson International Airport. The hotel is also close to the International Centre and the new Air Canada Centre - home of the NBA's Toronto Raptors and the NHL's Toronto Maple Leafs.

Single/Double \$145.00 CAD plus tax
Self parking \$14.00 CAD

To book hotel reservations online or for more information, visit www.cwre.ca. Remember: Book before October 26, 2006 to guarantee rates and availability.

Canadian Waste & Recycling Expo Pre-Registration Form

featuring **Canadian Public Works Expo**

1 Registration Information (please complete)

Name: _____

Company: _____

Address: _____

City: _____

Province/State: _____

Postal/Zip: _____ Country: _____

Phone: _____ Fax*: _____

Email*: _____

Web Site: _____

* By providing your fax number and/or e-mail address you are consenting to receive communications from Messe Frankfurt, Inc. and its affiliates via these media.

2 Profile

1. Areas of Business/Interest?

Waste and Recycling

- ☐ a. Government - Municipal, Provincial and Federal
- ☐ b. Collection
- ☐ c. Hauling
- ☐ d. Processing
- ☐ e. Composting
- ☐ f. Landfill
- ☐ g. Recycling
- ☐ 1. Scrap
- ☐ 2. Paper
- ☐ 3. Wood
- ☐ 4. Tires/Auto
- ☐ 5. C&D
- ☐ 6. Others _____ (please specify)
- ☐ h. Industrial and Commercial
- ☐ i. Manufacturing
- ☐ j. Institutional
- ☐ k. Consulting
- ☐ l. Other _____ (please specify)

Public Works

Please indicate sector?

- ☐ a. Provincial ☐ c. Federal
- ☐ b. Municipal ☐ d. Private
- ☐ a. Airport
- ☐ b. Construction
- ☐ c. Environmental / Hazardous
- ☐ d. Fleet
- ☐ e. Landfill
- ☐ f. Parks / Recreation
- ☐ g. Public Transportation
- ☐ h. Roads/ Highways
- ☐ i. Roadside/Grounds Maintenance
- ☐ j. Safety
- ☐ k. Snow / Ice Control
- ☐ l. Solid Waste Collection/Processing
- ☐ m. Traffic/Parking Garage Control
- ☐ n. Water/Wastewater
- ☐ o. Other _____ (please specify)

2. Job Function?

- ☐ a. Administration
- ☐ b. City Planner
- ☐ c. Consultant
- ☐ d. Coordinator
- ☐ e. Elected Official
- ☐ f. Engineer
- ☐ g. Equipment Operator
- ☐ h. Fleet Manager
- ☐ i. Manager
- ☐ j. Media/Press
- ☐ k. Operations
- ☐ l. Owner
- ☐ m. Plant Information Systems
- ☐ n. Public Works Supervisor
- ☐ o. Public Works Director
- ☐ p. Purchasing
- ☐ q. Technician/Technologist
- ☐ r. Transportation/Traffic
- ☐ s. Other _____ (please specify)

3. Annual Budget / Purchasing?

- ☐ a. Under \$100,000
- ☐ b. \$100,000 - \$200,000
- ☐ c. \$200,001 - \$500,000
- ☐ d. \$500,001 - \$1,000,000
- ☐ e. \$1million - \$3million
- ☐ f. \$3million - \$5million
- ☐ g. Over \$5 million

4. Business Objectives?

- ☐ a. Gather product/services information
- ☐ b. Initiate new contacts
- ☐ c. Cultivate existing contacts
- ☐ d. Make purchasing decisions
- ☐ e. Gain industry insight
- ☐ f. Place orders/obtain quotes
- ☐ g. Education

5. Industry Association Membership

- ☐ a. AMRC ☐ d. mwin ☐ g. Other _____ (please specify)
- ☐ b. AORS ☐ e. OWMA
- ☐ c. CCC ☐ f. SWANA

3 Expo and Seminar Registration

☐ Expo Only

Wednesday, November 29

9:00am - 10:15am

- ☐ \$1 ☐ \$2 ☐ \$3
- ☐ \$4 ☐ \$5

10:30am - 11:15am

- ☐ PS Plenary Session - FREE
- Sponsored by Consulate General Netherlands

3:30pm - 4:45pm

- ☐ \$6 ☐ \$7 ☐ \$8
- ☐ \$9 ☐ \$10

Thursday, November 30

9:00am - 10:15am

- ☐ \$11 ☐ \$12
- ☐ \$13 ☐ \$14

3:30pm - 4:45pm

- ☐ \$15 ☐ \$16
- ☐ \$17 ☐ \$18

(Free expo pass included with seminar registration)

For a complete listing of seminars and descriptions please visit us online at www.cwre.ca

Special Events Registration

Wednesday, November 29

12:00pm - 1:30pm

- SWANA - AGM Luncheon
- ☐ \$59/each

Thursday, November 30

12:00pm - 1:30pm

- mwin Annual CWRE Luncheon
- ☐ \$50/each
- ☐ \$450/table of 10

Wednesday, November 29

5:00 p.m. to 6:30 p.m. - Evening Reception

Hosted by: OWMA / Consulate-General of the Kingdom of the Netherlands

For more information: OWMA at 905.791.9500; Email: mgoingd@owma.org

4 Payment Information

(All prices in CDN\$ and includes GST)

- ☐ Individual Seminar Sessions _____ x \$ 49
- ☐ Expo Pass (free with any seminar sessions) _____ x \$ 35

Special Events

- mwin Annual Luncheon - per table (11/29/06) _____ x \$450
- mwin Annual Luncheon - per person (11/29/06) _____ x \$ 50
- SWANA - AGM Luncheon (11/30/06) _____ x \$ 59

TOTAL: C\$ _____

Payment must accompany this form in order for registration to be complete. No refunds will be given. All credit cards must be processed in Canadian funds. Seminars are subject to availability. No one under the age of 16 will be permitted on the show floor. size: 440x700mm

PAYMENT TYPE

Credit card: ☐ Visa ☐ AMEX

☐ Cheque (make payable to Messe Frankfurt, Inc.)

Card number: _____ Expiration date: _____

Name as it appears on card: _____

Billing Address: _____

Signature: _____ Date: _____

3 EASY WAYS TO REGISTER

ONLINE www.cwre.ca -or- www.cpwe.ca FAX 905.405.9870

MAIL cheque or money order (payable to Messe Frankfurt, Inc.) to:

Canadian Waste & Recycling Expo
c/o Conexsys
PO Box 283
Malton CSC
Mississauga, Ontario, Canada L4T 3B6

TORONTO 2006

Register to Attend at www.CWRE.ca or www.CPWE.ca

Canadian Waste & Recycling Expo / Canadian Public Works Expo Schedule

Wednesday, November 29, 2006

8:30 a.m. - 4:00 p.m.	Registration
9:00 a.m. - 10:15 a.m.	Morning Seminars
10:00 a.m. - 4:00 p.m.	Exhibits Open
3:30 p.m. - 4:45 p.m.	Afternoon Seminars

Thursday, November 30, 2006

8:30 a.m. - 4:00 p.m.	Registration
9:00 a.m. - 10:15 a.m.	Morning Seminars
10:00 a.m. - 4:00 p.m.	Exhibits Open
3:30 p.m. - 4:45 p.m.	Afternoon Seminars



Messe Frankfurt Inc.
1600 Parkwood Circle, Suite 515
Atlanta, GA 30339 USA

See our growing list of exhibitors - Visit www.cwre.ca -or- www.cpwe.ca